



A190 Met other Peace Corps volunteers in Swakopmund



A200 EFB looking west to Atlantic Ocean



A210 Frank at same location



A215 Marathon runners trained at Swakopmund – photo by FWB



A220 Entrance to Skeleton Coast, sign-in required



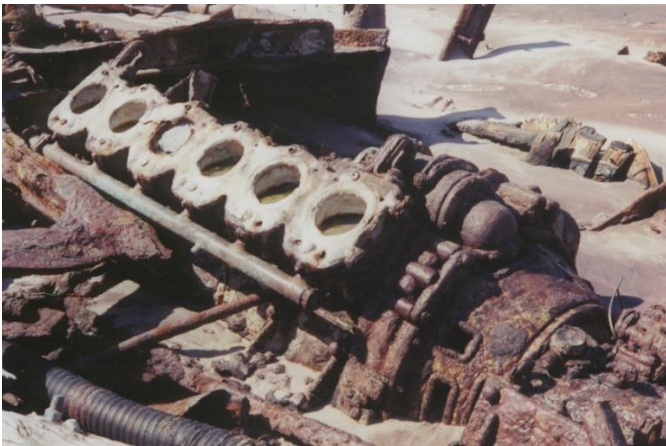
A230 Several miles up the coast – very desolate!



A240 From same spot, looking eastward



A250 Further up coast, remains of shipwreck!



A260 Remains of V-12 engine from 1976 shipwreck



A270 Desert oasis at Palmweg – see map A100

We turned inland at Torra Bay and drove to Palmweg – about half way between Skelton Coast and Estosha Pan



A275 Delicious evening meal, good overnight lodging.



A280 Safari for 8 people, left at 7 a.m. – much to see!



A290 Oh to have such foresight ability!



A300 Pictures of abundant wildlife from safari bus



A310 Poisonous! Non-natives burn and smoke kills!



A340 Left-most of three panoramic pictures

Fuel for fires is quite scarce. Guide told of non-natives burning the stalks and dying from breathing in the smoke.



A330 Middle panoramic picture



A320 Right-most of panoramic view.