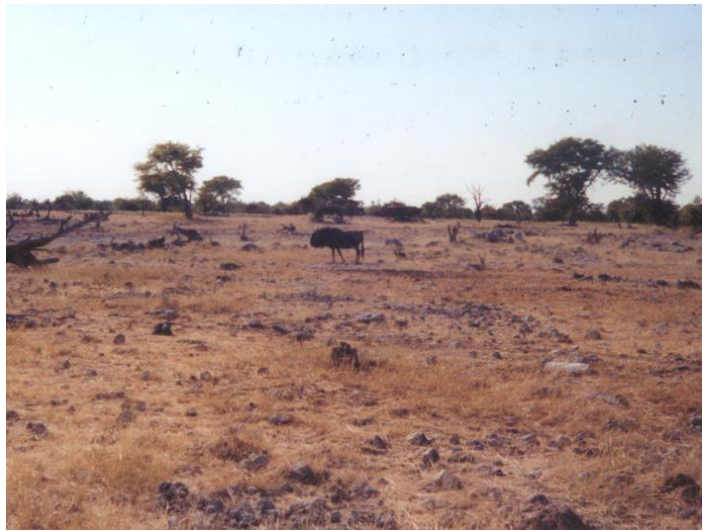


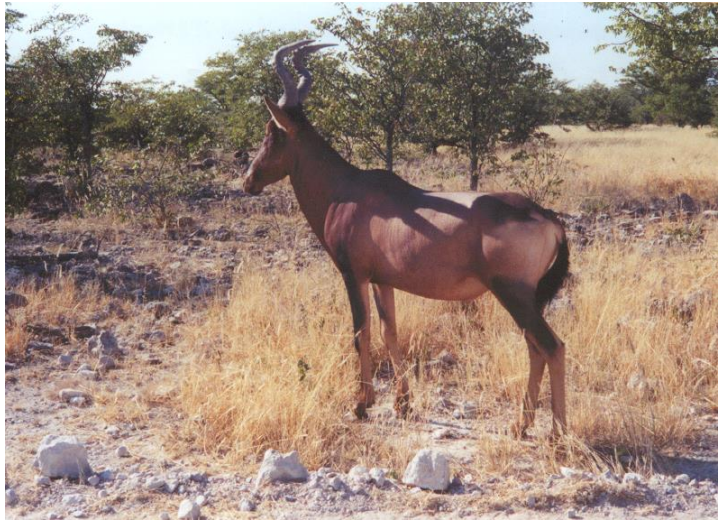
A350 Springboks are plentiful and cheetah food.



A360 Wildebeest (not pretty) headed for a waterhole.



A370 Nonchalant Red Hartebeest in the roadway.



A375 This Hartebeest actually “posed” for a photo.



A380 Typical waterhole – does not look very sanitary.



A390 Watch out for the elephant sh\*\* in the road.



A400 Frank and Toyota 4x4 on S. edge Etosha Pan



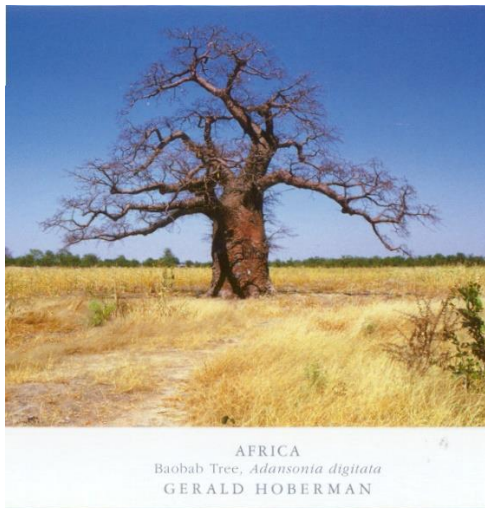
A410 EFB looking toward Frank's village about 40 mi.



A420 Halali compound Wildlife Preserve



A430 Postcard photo of Rhinos observed at waterhole.



A440 Postcard photo of Boaba tree – typical view



A450 Internet café 15 miles from Frank's home.



A460 Post Office 15 miles away, only occasional bus



A470 School where Frank taught grade 10 science/math



A480 A classroom bldg., about 300 students K-12



A485 Frank at home of "wealthy" host – he had a pickup

The village had no electricity (except solar). Water was hauled in and stored in elevated tanks.



A490 Wealth measured in "longhorn" cattle



A510 Herd belonging to Frank's host